

BLU35 AIR-WATER HEAT EXCHANGERS FOR DOOR OR WALL MOUNTING

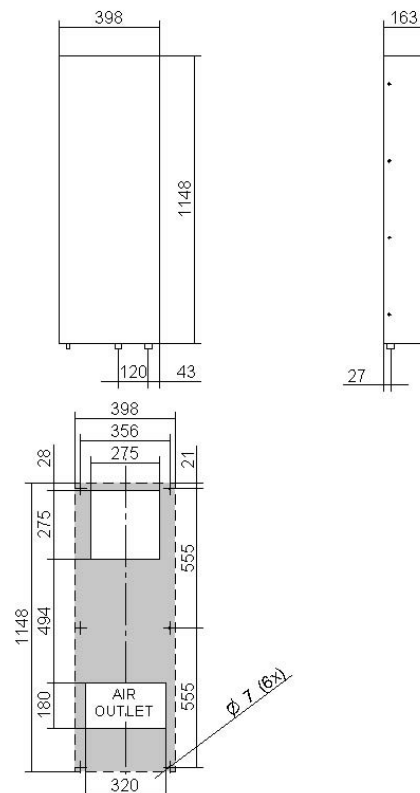
Characteristics	M.U.	BLU35BX0A	BLU35CX0A
Cooling capacity - W10A35	W	3500	3500
Water flow rate	l/h	500	500
Power supply	V ~ Hz	230 1~ 50-60	115 1~ 50-60
Width	mm	398	398
Height	mm	1148	1148
Depth	mm	163	163
Max. current	A	0,55	1,12
Fuse T	A	2	2
Absorbed electric power - W10A35	W	130	135
Duty cycle	-	100%	100%
Electrical connection	-	Cable L = 3 m	Cable L = 3 m
Refrigerant	-	Water	Water
Hydraulic circuit max. pressure	bar	5	5
Air flow rate	m ³ /h	1050	1050
Internal temperature range	°C	20-60	20-60
External temperature range	°C	1-70	1-70
Protection level EN60529	-	IP55	IP55
Noise level	dB (A)	64	64
Weight	Kg	29	29
Conformity	-	CE	CE
Colour	-	RAL 7032 orange peel effect	

Accessories/Options	
Thermostat 20-46°C, gas bulb 15A	C16000002
Solenoid valve, NC	C15000119
Level switch, NO	C16000140
Stainless steel version	
Special paint on request	

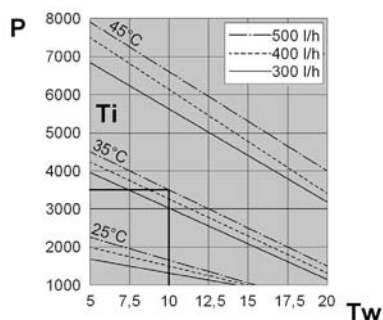
REMARK : The drilling templates are merely indicative.
Always put in touch with our technical-sales department for further explanation you should need.



Dimensions



Performances



P = Cooling capacity (W)
Tw = Inlet water temperature (°C)
Ti = Inside enclosure temperature (°C)

Drilling template