

# BLU45 AIR-WATER HEAT EXCHANGERS FOR DOOR OR WALL MOUNTING

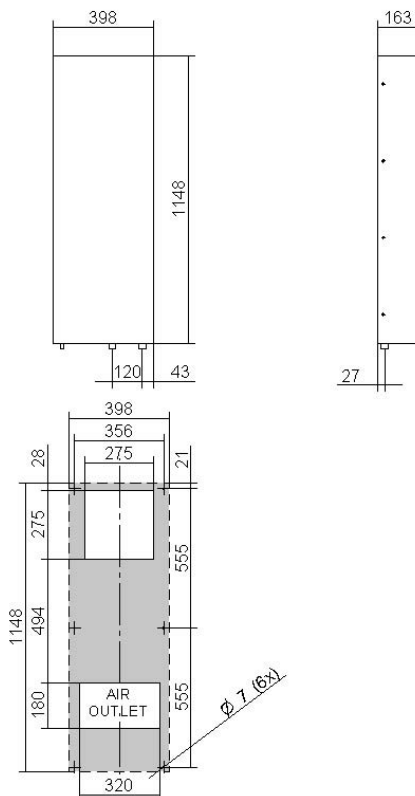
Characteristics	M.U.	BLU45BX0A	BLU45CX0A
Cooling capacity - W10A35	W	4500	4500
Water flow rate	l/h	500	500
Power supply	V ~ Hz	230 1~ 50-60	115 1~ 50-60
Width	mm	398	398
Height	mm	1148	1148
Depth	mm	163	163
Max. current	A	0,71	1,5
Fuse T	A	2	4
Absorbed electric power - W10A35	W	160	170
Duty cycle	-	100%	100%
Electrical connection	-	Cable L = 3 m	Cable L = 3 m
Refrigerant	-	Water	Water
Hydraulic circuit max. pressure	bar	5	5
Air flow rate	m <sup>3</sup> /h	1450	1450
Internal temperature range	°C	20-60	20-60
External temperature range	°C	1-70	1-70
Protection level EN60529	-	IP55	IP55
Noise level	dB (A)	69	69
Weight	Kg	30	30
Conformity	-	CE	CE
Colour	-	RAL 7032 orange peel effect	

Accessories/Options	
Thermostat 20-46°C, gas bulb 15A	C16000002
Solenoid valve, NC	C15000119
Level switch, NO	C16000140
Stainless steel version	
Special paint on request	

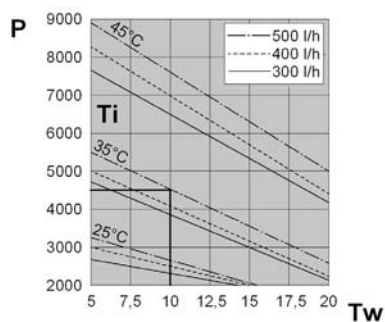
REMARK : The drilling templates are merely indicative.  
Always put in touch with our technical-sales department for further explanation you should need.



## Dimensions



## Performances



P = Cooling capacity (W)  
Tw = Inlet water temperature (°C)  
Ti = Inside enclosure temperature (°C)

## Drilling template